

THE AMERICAN CRIMINAL JUSTICE SYSTEM

DR. JASHON BANKS SR.

BIOGRAPHY

- DR. JASHON BANKS SR. IS A CRIMINAL JUSTICE PROFESSOR AT GREEN RIVER COLLEGE, WHERE HE DEVOTES TIME AND EFFORT TO CONTRIBUTE TO THE STUDENTS OF KNOWLEDGE AND SKILLS OF THE CHANGING CRIMINAL JUSTICE SYSTEM OF AMERICA. HE JOINED GREEN RIVER COLLEGE IN SEPTEMBER 2019 AS A TENURE-TRACK FACULTY MEMBER IN THE BUSINESS AND LAW DIVISION. HIS MOST RECENT ACTIVITIES HAVE BEEN CREATING STRATEGIC PARTNERSHIPS AND COMMUNITY RELATIONS FOR GREEN RIVER COLLEGE AND DEVELOPING PRACTICES WITH KING COUNTY PRETRIAL SERVICES TO CREATE A PATHWAY FOR RE-ENTRY OF INDIVIDUAL SEEKING TO COMPLETE SOME EDUCATION. HIS RESEARCH REVOLVES AROUND VICTIMS OF URBAN VIOLENCE AND POST-TRAUMATIC STRESS DISORDER. HE HAS BEEN ALSO PUBLISHING ARTICLES WITH THE CRIMINAL JUSTICE ENCYCLOPEDIA AND IN PROGRESS OF OTHER JOURNALS THAT WOULD BENEFIT THE CRIMINAL JUSTICE SYSTEM OF WASHINGTON STATE.



WHY ARE THESE TOPICS RELEVANT TODAY?

- POLICING IN AMERICA
 - DEVELOPMENT OF POLICING IN AMERICA
 - WHO ARE POLICE? RECRUITMENT
- POLICE & LAW
 - LEGAL LIMITATIONS ON POLICE INVESTIGATIONS
 - WARRANTLESS SEARCHES
 - EXCLUSIONARY RULE
- PRE-TRIAL PROCEDURES, PLEA BARGAINING, AND THE CRIMINAL TRIAL
 - FROM ARREST TO TRIAL OR PLEA
 - PRE-TRIAL DETENTION
 - PLEA BARGAINING
- JUVENILE JUSTICE
 - DATA ON JUVENILES

HAS POLICING GONE TO FAR IN AMERICA?



CONTACT INFORMATION

- I WANT TO PARTNER WITH COMMUNITY MEMBERS TO HELP EDUCATE BLACK, INDIGENOUS, AND PEOPLE OF COLOR (BIPOC) ABOUT THE AMERICAN CRIMINAL JUSTICE SYSTEM AND HELP UNDERSTAND THEIR RIGHTS.
- DR. JASHON A. BANKS SR.
 - EMAIL: JASHON.BANKS@GMAIL.COM
 - MOBILE: (253) 376-2332



PIERCE COUNTY COMMUNITY ENGAGEMENT

T A S K F O R C E



POWERED BY WORKFORCE CENTRAL

Creating a Blueprint for

DIVERSITY AND INCLUSION

in Construction

Rachael Pease, Diversity Program Manager, Korsmo Construction



INCEPTION AND IMPLEMENTATION OF PROGRAM



“

Korsmo Construction is one of the leaders in the construction industry in diversity, equity, and inclusion. They have worked on three campus replacement projects for the district and they have exceeded our expectations.

—Morris Aldridge, Executive Director of Planning and Construction, Tacoma Public Schools



BENEFITS OF OUR DIVERSITY PROGRAM

- Fulfillment of diverse business participation goals
- Increased bid coverage, resulting in competitive pricing
- Development of the local subcontracting community for use on future projects
- Promotion of state certification with the Washington State Office of Minority and Women's Business Enterprises
- Mentorship of new small businesses and minority-owned companies
- Apprenticeship and youth mentorship programs

CREATING PATHWAYS TO APPRENTICESHIP

Joaquin Santos is one of three young Suquamish Tribe members who joined the Laborers Union apprenticeship program through work on Korsmo Construction's White Horse Golf Club project.

ACHIEVING DIVERSITY GOALS

CLIENT PROJECT NAME	CONTRACT VALUE	OWNER'S SBE/DBE GOAL	ACTUAL SBE/DBE PARTICIPATION
Tacoma Public Schools Boze Elementary School Replacement Progressive Design–Build	\$35.3 million	50%	84%
Tacoma Public Schools Grant Center for the Expressive Arts GC/CM	\$25.6 million	50%	85%
Metro Parks Tacoma Eastside Community Center GC/CM	\$25.3 million	26%	33%
South Puget Sound Community College Center for Business and Innovation Design–Build	\$9.2 million	11%	12%
Clover Park School District Rainier and Meriwether Elementary Schools GC/CM	\$49 million	15%	27%



WHERE WE ARE TODAY

- Diversity committee meets weekly
- Diversity, equity, and inclusion training for staff
- Program to attract and retain a diverse workforce
- Subcontractor bootcamp
- Mentorship for small businesses
- Youth mentorship for trade occupations
- Companywide community outreach

SUPPORTING BLACK-OWNED BUSINESSES

Korsmo employees regularly support black-owned businesses while encouraging our industry and community partners to do the same.

AWARDS AND RECOGNITION



- 2020 Moss Adams/AGC of Washington "Champion of Diversity Award"
- 2019 NAIOP Night of the Stars "Community Impact Development Project of the Year"
- 2019 Moss Adams/AGC of Washington "Service to the Community Award"
- Industry speaking engagements
- Recognized leaders in diversity, equity, and inclusion



We needed a general contractor that could not only deliver an excellent facility, but genuinely connect with the community as well. Korsmo exceeded all of our expectations.

—Dave Lewis, Former Parks and Recreation Deputy Director, Metro Parks Tacoma



Rachael Pease

Diversity Program Manager

(253) 582-6712

rachaelp@korsmo.com



We would like to recognize Rachael Pease, Korsmo Construction's Diversity Program Manager. Her efforts in working with the Women and Minority Business Community located throughout the Puget Sound region, and especially Tacoma, Washington, are an asset.

—Linda Womack, Director, Minority Business Development Agency—Tacoma Business Chapter



PIERCE COUNTY COMMUNITY ENGAGEMENT

T A S K F O R C E



POWERED BY WORKFORCE CENTRAL

Help us better serve you.

Share your voice. Take our 2021-2022 Budget Survey.



CREATING HEALTHY OPPORTUNITIES TO PLAY, LEARN AND GROW.

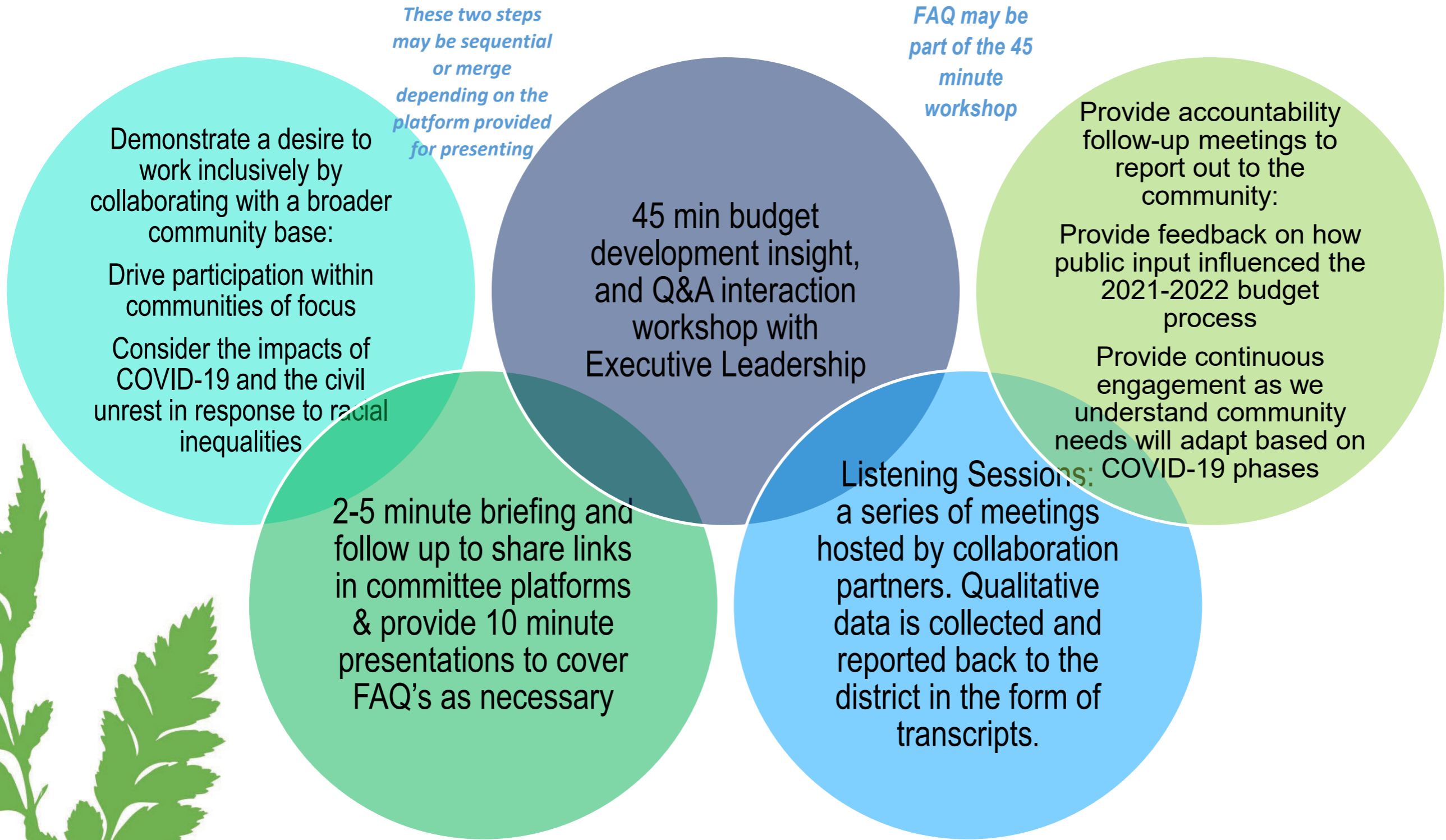


Metro Parks Tacoma is working on our 2021-2022 budget and we need your help in prioritizing our community needs. Based on current financial and economic impacts of COVID-19, we are currently forecasting a \$10 million reduction to our upcoming 2-year operating budget.

This two-step process includes:

- 1. A brief survey; (available in 6 different languages)**
- 2. An interactive tool that demonstrates how we fund our Parks, Recreation, and Zoological operations.**

**You will be asked to
make necessary reductions
or
reinvest resources
to meet the changing needs of our community.**





PIERCE COUNTY COMMUNITY ENGAGEMENT

T A S K F O R C E



POWERED BY WORKFORCE CENTRAL

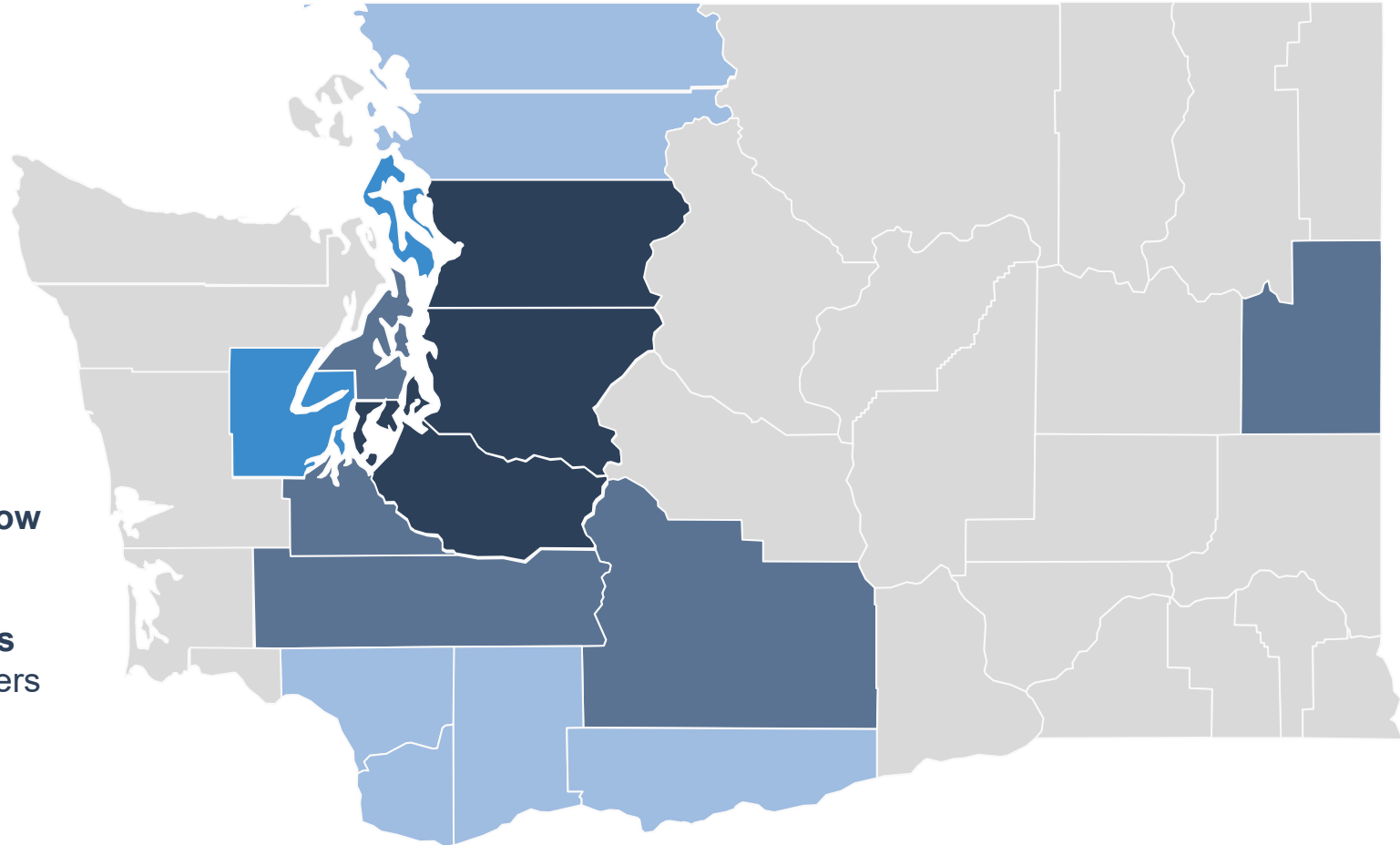
Building Healthier Communities Together

We connect health and social care.



A Statewide Washington Network

- ❖ Technology company that is **connecting health and social services** via the Unite Us shared technology platform
- ❖ **Closed-loop referrals**
- ❖ **Live network in Pierce, King, and Snohomish counties** with over 90 community-based organizations
- ❖ Participation varies. **YOU let us know how you want to participate.**
- ❖ **No cost to community-based orgs** and to most community health centers
- ❖ **Support provided.** From technical assistance to training to IT support



■ Unite Washington live (includes WAServes)

■ WAServes live; Broader network launch upcoming

■ WAServes live

■ Upcoming launches in additional counties

Network Model: Any-Door Approach

Understanding Referral Workflows



Next Steps to Join the Unite Washington Network

Recommend Potential Network Partners

Email gracious.gamiao@uniteus.com to refer additional organizations to the network, or to request a presentation for an existing community group.

Submit Your [Partner Registration Form](#)

PRF collects details about your organization's services, programs, eligibility requirements, and staff members.

Contact Us for Workflow Guidance

Email gracious.gamiao@uniteus.com to request a Workflow Planning Meeting for your organization, if needed.

Attend tomorrow's Q&A Session, 10/8 2-3pm PT

We'll provide more detailed information and a demo of the Unite Us tech platform

Get in Touch

Thank you!

Gracious Gamiao

Community Engagement Manager

gracious.gamiao@uniteus.com

(206) 200-0244

Follow Us

